

# **NYC HIGH SCHOOL ADMISSIONS**

**DEMYSTIFYING PROCESS, ISSUES AND ADVOCACY 2020**

Prepared by Chris Giordano

Updated May 13, 2020

# NYC HIGH SCHOOL ADMISSIONS 2020

## Booker T / High School Offers

Snapshot of 340 Offers Made to 257 8<sup>th</sup> Grade Students

<u>Dist</u>	<u>Stds</u>	<u>Schools</u>
D1	20	(incl 15 NEST+M)
D2	130	(incl 12 Stuyvesant, 36 Beacon, 14 Clinton, 16 HSES, 16 Museum)
D3	57	(incl 29 LaGuardia, 14 Frank McCourt)
D4	26	(incl 22 Manhattan Center)
D5	11	(all HSMSE)
D10	38	(all 27 Bronx Science and 11 Lehman)
D13	25	(all Brooklyn Tech)
D14	15	(all Brooklyn Latin)
D24	5	(all Bard Queens)
D30	13	(all Frank Sinatra School of the Arts)

# NYC HIGH SCHOOL ADMISSIONS 2020

	NYC DOE	District 3	Booker T
<b>8<sup>th</sup> Grade Applicants</b>	<b>78,463</b>	<b>1,405</b>	<b>257</b>
<u>Non-Specialized Offers</u>			
1 <sup>st</sup> Choice	34,797 (44%)	TBC	69 (27%)
Top 3 Choices	57,278 (73%)	TBC	129 (50.2%)
<u>Specialized High School Offers</u>			
Test Takers	27,800 (35%)	578 (41%)	206 (80%)
Offers	4,264 (15%)	183 (32%)	102 (49%)
Discovery Program offers to be made in June (20% of SHS seats +/- 1,000 city wide)			

# NYC HIGH SCHOOL ADMISSIONS 2020

## **District 3 / Specialized High School Test Takers and Offers**

2020: 1,405 students	-> 578 (41%) took test	-> 183 (32%) offers
2019: 1,471 students	-> 639 (43%) took test	-> 248 (39%) offers
2018: 1,433 students	-> 821 (57%) took test	-> 266 (32%) offers
2020 Discovery offers to be made in June (D3 = 52% Economic Need Index)		

# NYC HIGH SCHOOL ADMISSIONS 2020

## **Booker T / Specialized High School Test Takers and Offers**

2020: 257 8<sup>th</sup> graders -> 206 (80%) took the SHSAT -> 102 offers = 49%

2019: 295 8<sup>th</sup> graders -> 255 (86%) took the SHSAT -> 156 offers = 61%

2018: 283 8<sup>th</sup> graders -> 282 (99%) took the SHSAT -> 150 offers = 53%

Discovery Program no longer available to Booker T students as of 2019 (23% ENI)

### Note:

NYS Class of 2020: 7th grade proficiency ELA 89% Math 88%

NYS Class of 2019: 7th grade proficiency ELA 92% Math 91%

NYS Note: 2020 ELA 3% drop all in 4s - Math 4s drop from 82% to 73%

The Class of 2020 has one less 8<sup>th</sup> grade honors class than 2019

# NYC HIGH SCHOOL ADMISSIONS 2020

## Booker T / Non-Specialized High School Ranking Outcomes

Of 257 8<sup>th</sup> grade students: 230 (89%) received matches, 176 (68%) listed 12 choices, 27% received their 1<sup>st</sup> choice, and 50% received one of their top 3 choices

1st choice = 69 (27%)

7<sup>th</sup> choice = 15 (6%)

2<sup>nd</sup> choice = 41 (16%)

8<sup>th</sup> choice = 10 (4%)

3<sup>rd</sup> choice = 19 (7%)

9<sup>th</sup> choice = 13 (5%)

4<sup>th</sup> choice = 19 (7%)

10<sup>th</sup> choice = 6 (2%)

5<sup>th</sup> choice = 14 (5%)

11<sup>th</sup> choice = 2 (1%)

6<sup>th</sup> choice = 14 (5%)

12<sup>th</sup> choice = 8 (3%)

D3 High Schools:

Arts and Technology, Edward Reynolds, Frank McCourt, Global Learning, Innovation Diploma, LaGuardia, Law Advocacy, Manhattan/Hunter Science, Maxine Greene, Special Music School, Urban Assembly, Wadleigh, WESS

# NYC HIGH SCHOOL ADMISSIONS 2020

## **TOPICS AND ISSUES**

Specialized High Schools

Discovery Program

Complex Citywide Process

College Path

Systemic Inequities

The Debate

The Politics

# NYC HIGH SCHOOL ADMISSIONS 2020

<b>Districts</b>	<b>#Schools</b>	<b>#Students</b>	<b>#SHSAT Takers</b>	<b>#SHSAT Offers</b>
<u>SHSAT Manhattan</u>				
D1-6	95 sch	-> 8,260 std	-> 2,903 (35%) tested	-> 816 (28%) offers
<u>SHSAT Bronx</u>				
D7-12	115 sch	-> 14,172 std	-> 3,532 (25%) tested	-> 102 (3%) offers
<u>SHSAT Brooklyn</u>				
D13-22+32	127 sch	-> 18,815 std	-> 7,021 (37%) tested	-> 1,093 (16%) offers
<u>SHSAT Queens</u>				
D23-30	117 sch	-> 21,753 std	-> 7,301 (34%) tested	-> 1,229 (17%) offers
<u>SHSAT Staten Island</u>				
D31	15 sch	-> 4,206 std	-> 1,075 (26%) tested	-> 94 (9%) offers
<u>Charters</u>				
D84	126 sch	-> 7,744 std	-> 3,356 (43%) tested	-> 94 (3%) offers



# NYC HIGH SCHOOL ADMISSIONS 2020

## SHSAT Manhattan

D1-6	8,260 students	-> 2,903 (35%) took test	-> 816 (28%) offers
D1	808 students	-> 324 (40%) took test	-> 113 (35%) offers
D2	2,780 students	-> 1,423 (51%) took test	-> 462 (32%) offers
D3	1,405 students	-> 578 (41%) took test	-> 183 (32%) offers
D4	954 students	-> 206 (22%) took tests	-> 32 (16%) offers
D5	690 students	-> 93 (13%) took tests	-> 18 (26%) offers
D6	1,623 students	-> 279 (17%) took tests	-> 8 (29%) offers

# NYC HIGH SCHOOL ADMISSIONS 2020

## Discovery Program

Hecht-Calandra law provision meant to allow SHS seats for “disadvantaged students”

Qualification was formerly based on individual status

As of 2019 access changed to students from schools with > 60% Economic Need Index as well as household income, housing situation, English Language Learner status

Through 2018 single digit % offers, 2019 = 13%, 2020 = 20%

Anecdotal reports -> little demographic change, expansion is bringing students from different middle schools, no drop in academic level

Christa McAuliffe IS 187 PTO lawsuit by Pacific Legal Foundation

Claude Millman, Esq. pro bono representation [cmillman@kflaw.com](mailto:cmillman@kflaw.com)

# NYC HIGH SCHOOL ADMISSIONS 2020

## **Complex Citywide Process**

My Schools on-line resource has now become the central info source

Time consuming fairs and open houses

Multiple admissions methods, i.e. open, zoned, ed opt, test, audition, etc.

Multiple application criteria, i.e. interviews, portfolios, essays

Capacity issues: Queens and Brooklyn are over capacity; Manhattan has available capacity

Transit issues: Outer borough transit deserts vs Manhattan transit hub

Complex application process may be one of the biggest equity issues

# NYC HIGH SCHOOL ADMISSIONS 2020

## College Path High Schools

2019 data:

5% (26 of 489 high schools) offer at least 4 STEM APs

15% (73 of 489 high schools) offer at least 7 APs in any subject

The AP debate: Colleges look at level of rigor; some offer credit therefore saving \$

Alternatives to AP include International Baccalaureate and College Now

# NYC HIGH SCHOOL ADMISSIONS 2020

Page 4  
May 23, 2019

Table 1 - Comparison of Audition (LaGuardia), SHSAT (8 Specialized H.S.), and Multi-Factor (non-Specialized) School Admissions

Data for non-specialized Schools is grouped into SAT-sorted tiers of approximately 15,000 H.S. seats (each tier/bracket represents 5% of all H.S. seats). The yellow highlights compare SHSAT-admission schools to a matched sized group of the highest performing non-specialized (multi-factor admission) schools.

Applic Method	Grouping/ Brackets	School Name (schools grouped into the 15,000 seat brackets are listed together)	Top 40 on Niche	US News Top 100 in NY (27 NYC)	Enrollment (total = 296,701)	Admit Method & Avg Seats/ School	DOE HS Performance Excel File						DOE HS Directory Excel File				DOE % Female (DOE H.S. avg is 49%)		
							SAT math + write	Metric Value - % Scoring 3+ on any AP Exam	Economic Need Index	% Asian	% Black	% Hispanic	% White	Metric Value - 4-Year Graduation Rate	Student Feels Safe	Avg # AP Class Offered		#AP Core STEM (Bio, Chem, Phys, Calc AB, BC)	#AP 8 STEM (Bio, Chem, Phys, Calc AB, BC, Comp, Env, Stat)
Audition	La Guardia (1% of H.S. seats)	Fiorello H. LaGuardia High School of Music&Art	yes	yes	2,809	Audition	1,288	78%	31.1%	20.0%	10.3%	17.9%	45.7%	98.7%	95%	20	5	8	76%
SHSAT	Total SHSAT (total 15k seats = @5% of all H.S. seats)	8 SHSAT schools: Stuyvesant, Bronx Science, Staten Island Tech, High School Sci/Math/Eng, American Studies Lehman, Queens York, Brooklyn Tech, Brooklyn Latin	all (8 of 8)	all (8 of 8)	15,540	1,943	1,429	86%	45.6%	62.1%	4.2%	6.1%	24.2%	98.7%	94.3%	13.3	3.4	5.4	42%
Multi-Factor non-SHS, in top 25%	Tier1 (top 16k non-SHS seats, based on SAT). Group 15-30k. 5% of all H.S. seats. Top10%	19 schools: Townsend, Bac for Global Educ, NEST, Bard (Manhattan), Eleanor Roosevelt, Bard Queens, Millenium (Manhattan), Manhattan Hunter Science, Goldstein, Columbia, Beacon, Scholars Academy, NYC Lab, Baruch, Dual Language/Asian Studies, Millenium Brooklyn, Manhattan Center for Sci/Math, ICE, Midwood	majority (17 of 19)	majority (12 of 19)	16,412	864	1,246	51%	50.8%	29.7%	15.7%	19.7%	31.3%	96.7%	91.4%	7.5	2.1	3.1	57%
	Tier2 (next 15k non-SHS). Group 30-45k. Top15%	13 schools: City Leadership, Queens Gateway, Francis Lewis, Special Music, NYC Museum, Democracy Prep Harlem, Democracy Prep Charter, CSI for International, Brooklyn College, Manhattan Village, Frank Sinatra, Benjamin Cardozo, Bayside	some (3 of 13)	some (4 of 13)	15,653	1,204	1,135	36%	55.2%	38.7%	17.6%	25.2%	16.6%	92.0%	85.0%	6.7	1.5	2.6	53%
	Tier3 (next 15k non-SHS). Group 45-60k. Top20%	14 schools: American Studies, iSchool, York, Sci/Tec/Research, Maspeth, Medgars, School of the Future, Ques Inquiry, Forest Hills, Prof Performing Arts, Young Women's Leadership, Thomas Edison, HS For Constr/Eng, Tottenville	some (5 of 14)	1 of 14	16,571	1,184	1,096	30%	50.5%	20.6%	15.1%	24.9%	34.9%	93.5%	84.1%	7.3	2.0	2.9	51%
	Tier4 (next 15k non-SHS). Group 60-75k. Top25%	14 schools: Central Park E, E-W International, Frank McCourt, Benjamin Banneker, Bedford, Kingsborough, Renaissance, Aviation/Tech, Bronx Center for Sci/Math, Edward Murrow, Coney Island Prep, Fort Hamilton, Brooklyn Prospect Charter, Collegiate Institute for Ma/Sci	1 of 14	none	15,323	1,095	1,070	24%	68.9%	23.1%	19.3%	31.9%	23.0%	87.1%	85.0%	6.2	1.6	2.6	48%
Reference point - 2017 nationwide average SAT							1,060												
all other Multi-Factor non-SHS	All other schools - 70% of seats (another 3% lack data & are excluded)	Averages for all remaining seats (from 75k to 296k seats), for 382 schools that had data. An additional 3% of seats (38 schools) are excluded from summary due to lack of data.	5 of 382	1 of 382	206,441	540	930	11.6%	78.5%	10.7%	30.7%	47.6%	8.8%	78.9%	81.2%	2.9	0.5	0.9	48.3%

Performance data from spring 2018 tests. Directory data from 2017/18 directory. Both excel files downloaded 12/2018 from DOE website.

# NYC HIGH SCHOOL ADMISSIONS 2020

## **Systemic Inequities**

73% of NYC DOE population is within Economic Need Index (students living in poverty)

Admission screens show students sorted in socio-economic clusters

Marginalized communities experience Achievement/Opportunity Gaps

Bloomberg administration made systemic changes

-> reduced school size reduced offerings, i.e. AP classes

-> changed G&T/Honors process reduced SHS feeders

# NYC HIGH SCHOOL ADMISSIONS 2020

## **The Debate**

Heterogeneous, multiple criteria, equal distribution, open admissions

vs.

Competitive "merit based" standardized diagnostic system

Equity Advocates: NYC ASID, Teens Take Charge, Integrate NYC, NYU Metro Center, SDAG members, Education Council Consortium

Accelerated Advocates: PLACE NYC, Education Equity Campaign, Coalition EDU

# NYC HIGH SCHOOL ADMISSIONS 2020

## **The Politics**

Mayoral control of DOE with no checks & balances from City Council

1971 Hecht-Calandra state law established SHS admissions process: “competitive, objective and scholastic achievement examination” with Discovery program for “disadvantaged students”

2019 AM Barron’s 7% multiple measures bill to replace H-C; no full vote

2019 CEC3 resolution addressed inequities, opposed 7% plan

2020 AM Barron's bill A2173 brings SHS admissions to NYC control

Other bills include AM Peter Abbate's bill A8435 to expand SHS



# NYC HIGH SCHOOL ADMISSIONS 2020

## Some Next Steps

We will continuously update MS54 High School pages with new info

Let's work together:

- Update data: demo, grad rate, safety, attendance, APs, travel, etc.
- Attend CEC3, CB7 and other community meetings and speak up!
- Contact elected representatives (consider trips to Albany)
- Potential Advocacy:
  - Simplify admissions process, e.g. common app, single list, lottery
  - Create D3 zoned/priority options by aggregating available capacity and/or creating new programs, i.e. expansion of Lafayette Dual Language IB
  - Remove/expand barriers, i.e. D2 -> Manhattan wide
  - Expand Specialized High School opportunities

# NYC HIGH SCHOOL ADMISSIONS 2020

## **Appendix**

New York Government and Legislative Overview

NYC DOE Community School District Map

NYC Elected Parent Advocates

NYC Government Organization Chart

New York State Organization Chart

New York State / How a Bill Becomes a Law

# New York Government and Legislative Overview

## **New York State**

The New York State Education Department (NYSED) establishes the budget and is responsible for the supervision for all public schools in New York and all standardized testing including the Regents Examinations.

Hecht-Calandra is the 1971 state law that requires the SHSAT.

The State Assembly Education Committee Chair is Michael Benedetto (District 82, Bronx)

The Senate Education Committee Chair is Shelley Mayer (District 37, Westchester)

The Senate Chair for NYC Education is John Liu (District 11, Queens)

## **New York City**

Mayoral control of the DOE granted incrementally by the State Assembly since 2002; next expiration in 2022

The Mayor appoints the Chancellor and a majority of the 13 member Panel for Education Policy

The City Council Education Committee Chair is Mark Treyger (District 47, Brooklyn)

32 Community School District Councils have 9 locally elected members plus 2 Borough President appointees

# NYC DOE Community School Districts

**NYC** Department of Education  
New York City Department of Education  
Map of Instructional Divisions  
Carmen Fariña, Chancellor



# NYC Elected Parent Bodies

## **New York City Elected Parent Organizations**

There are elected parent bodies organized by school, district, borough and city-wide

PTA/PTO/PA – each school is required to have an operational elected body

SLT – each school is required to have a School Leadership Team made up of equal parts parents and faculty responsible for each school's Comprehensive Education Plan (CEP)

Presidents Council – elected presidents or their designee are part of each district's Presidents' Council. Each Presidents' Council has an elected Executive Board

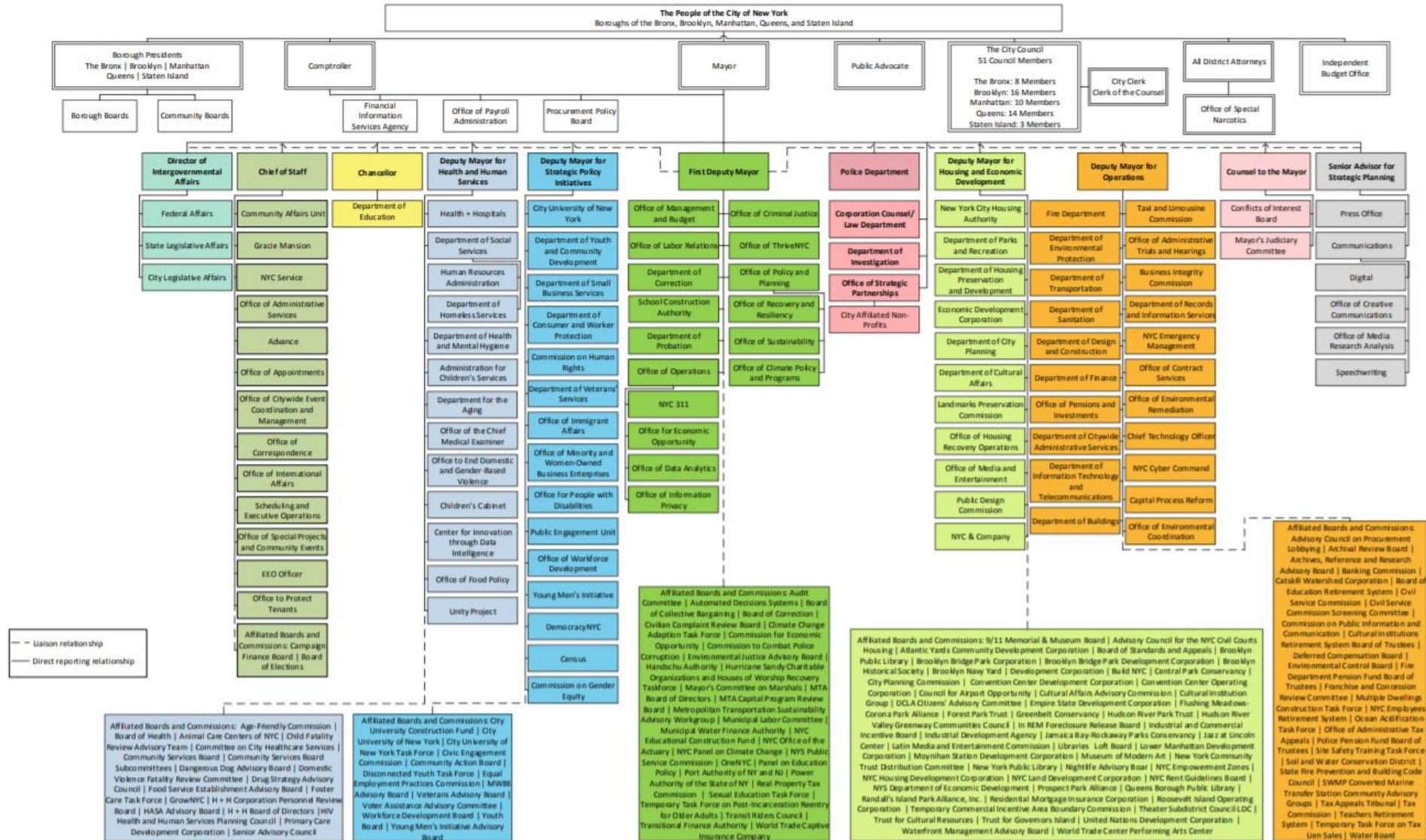
Chancellor's Parent Advisory Council – the president of each Presidents' Council attends a monthly CPAC meeting with the Chancellor and Deputy Chancellors

Community Education Councils – the 32 Community School District Councils have 9 locally elected members plus 2 Borough President appointees; authority includes approving zoning lines

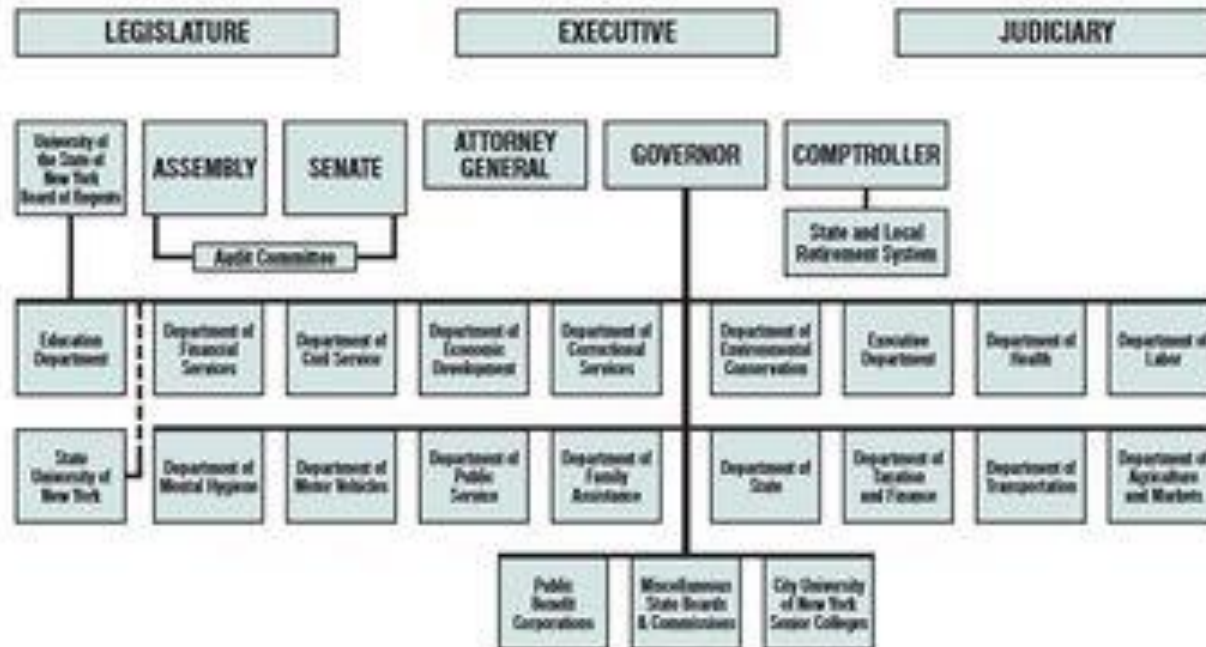
Citywide Councils – Citywide Council on High Schools (CCHS), Citywide Council on Special Education (CCSE), Citywide Council on English Language Learners (CCELL), and Citywide Council for D75 (CCD75)

NB: Chancellor's Students Advisory Council CSAC and Borough Student Advisory Council BSAC

# NYC Government Organization Chart



# New York State Organization Chart



# New York State / How a Bill Becomes a Law

